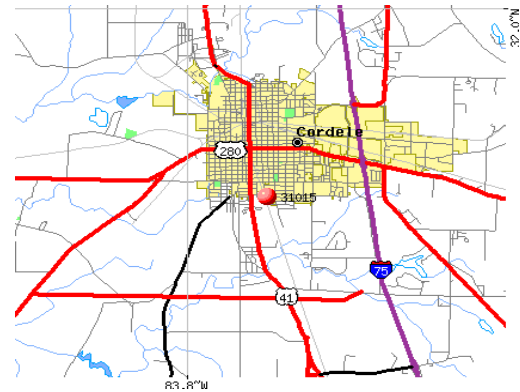
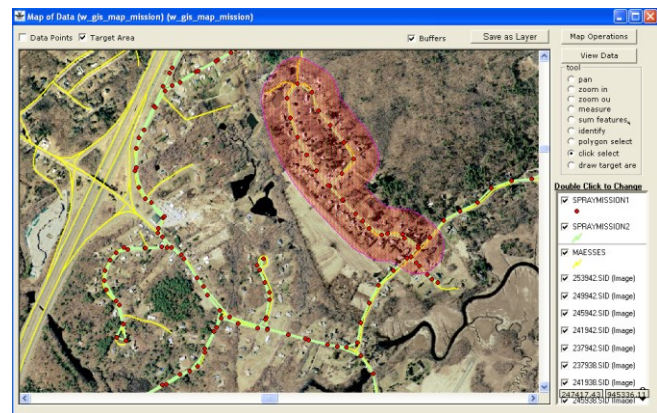


City of Cordele: Installation of Sanitary Sewer Flow Meters

<b>Project:</b>	Installation and Calibration of Sanitary Sewer Flow Meters.
<b>Client:</b>	The City of Cordele
<b>Location:</b>	The City of Cordele, GA
<b>Completion:</b>	On Call Services as Necessary to Troubleshoot and Calibrate Meters



**Objective:** On the recommendation of the meter equipment manufacturer, MME was contracted to install and perform initial calibration and setup for 4 sanitary sewer flow meters.



In December 2011, the City of Cordele, GA began on a process of collecting flow data in an effort to enhance its operations and maintenance of the sanitary sewer collection system. The first step was to install meters to monitor flows on 4 primary sub-basins.

MME undertook these installations and the City is now obtaining accurate data of the flow regime with the collection system. MME continues to work with the City to perform calibrations and provide analysis of data as may be required by the City.